

# Tsau//Khaeb National Park Overview on Integrated Development

**PRESENTED BY HARRY TJIHUKUNUNA  
DEPUTY DIRECTOR: SOUTHERN REGIONS**

**HAN TOURISM CONGRESS  
18 FEBRUARY 2022  
LUDERITZ**



# Introduction.

The Tsau / Khaeb National Park was proclaimed in 2008.

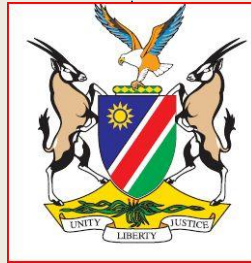
The TKNP is located in the south western corner of Namibia. (Kharas Region)

The TKNP covers an area of 2,2 million hectares.

The majority of the TKNP falls within the Succulent Karoo Biome. (World Biodiversity Hotspot)



All National Parks and Game Parks fall under the mandate of the Ministry of Environment, Forestry and Tourism.



The Directorate of Wildlife and National Parks is responsible for the management of all National Parks and Game Parks within the country as gazetted in terms of the law.



# The three Parks in the //Kharas Region fall under the Division Southern Regions

Deputy Director	(Keetmanshoop)
Control Warden	(Keetmanshoop)
Chief Warden	(Rosh Pinah)

- /Ai-/Ais/Richtersveld Trans frontier Park  
Warden (Rosh Pinah)
- Naute Game Park  
Warden (Naute)
- Tsau //Khaeb National Park  
Warden (Luderitz)  
Warden Mr. C. Kutako  
(Oranjemund)  
Warden (Luderitz)  
Rangers (Aus, Luderitz, ORJMD)  
Asssistant Rangers (Aus, Luderitz, ORJMD)  
Admin Officer (Aus)

# Management Plan for the Tsau // Khaeb National Park 2020- 2030



The Management Plan sets out the vision, objectives and guidelines for the management and development of the Park.

The Plan gives a brief background to the Park including its purpose and objectives.

The Plan covers the period from 2020 until 2030.

Copies can be obtained from the Ministry.

# The Plan has 17 Chapters as covers the following:



- Overview of the Park
- Management Objectives
- Zonation
- Landscape Connectivity
- Management of Natural Resources and special sites.
- Adaptive Management
- Management of historical sites.
- Co- management.
- Prospecting and Mining
- Tourism Development and management
- Infrastructure
- Administration and management
- Five year operational plan
- Bibliography
- Acknowledgements by the authors
- Glossary.



## Planning for tourism in the TKNP.

A Tourism Development plan (TDA) was approved in August 2019 and is valid for a period of 10 years.  
(Copies can be obtained from MEFT)





## The Tourism Development Plan has highlighted the following.

### Tourism Infrastructure:

- Roads –mostly 4x4 access only
- Overnight –mobile camps only
  - Renovated old buildings
  - Minimum new structures
- Refreshment stations –interpretation and refreshment area
  - Renovated old buildings
  - Minimum new structures
- Resorts / Lodges -peripheral near or at towns (infrastructure, services, impact, economics & control)
  - Activities:
- Self-drive only allowed in designated recreation and adventure nodes next to town centres.

- Rest of TDAs only guided access.

### Concessions:

- Guided activities -one concessionaire per TDA (Viability & Control)
  - Adventure and Recreation Zones
    - Obligation for maintenance of day visitor areas
  - Link to either TDA or resort concession for viability
    - Concession Structure
  - MET Concessioning Policy
- Head Concession Contract and Operator's Contract



## Process to award the Concessions:

- Advertised in the media and website
- Bidding documents were available as from 1 April 2021 and proposal submission date was 18 June 2021.

1. North Sand and Sea,
2. Luderitz Peninsula
3. Kolmanskop
4. Luderitz Coast and Mining
5. Game Viewing and Rotterdam
6. Orange River.

The bids that were received were evaluated by a Committee appointed by the ED during the week. 2- 5 July 2021

The successful bidders were presented to the Minister for approval on the 13th July 2021.



## SUMMARY OF CONCESSIONS

### Northern Dunes TDA

1. Northern Sand and Sea

### Coastal and Mining History TDA

2. Lüderitz Peninsula

3. Kolmanskoppe

4. Lüderitz Coast and Mining

### Aus-Lüderitz Link TDA

5. Old Wagon Trail

### Eastern TDA

6. Game Viewing and Roter Kamm

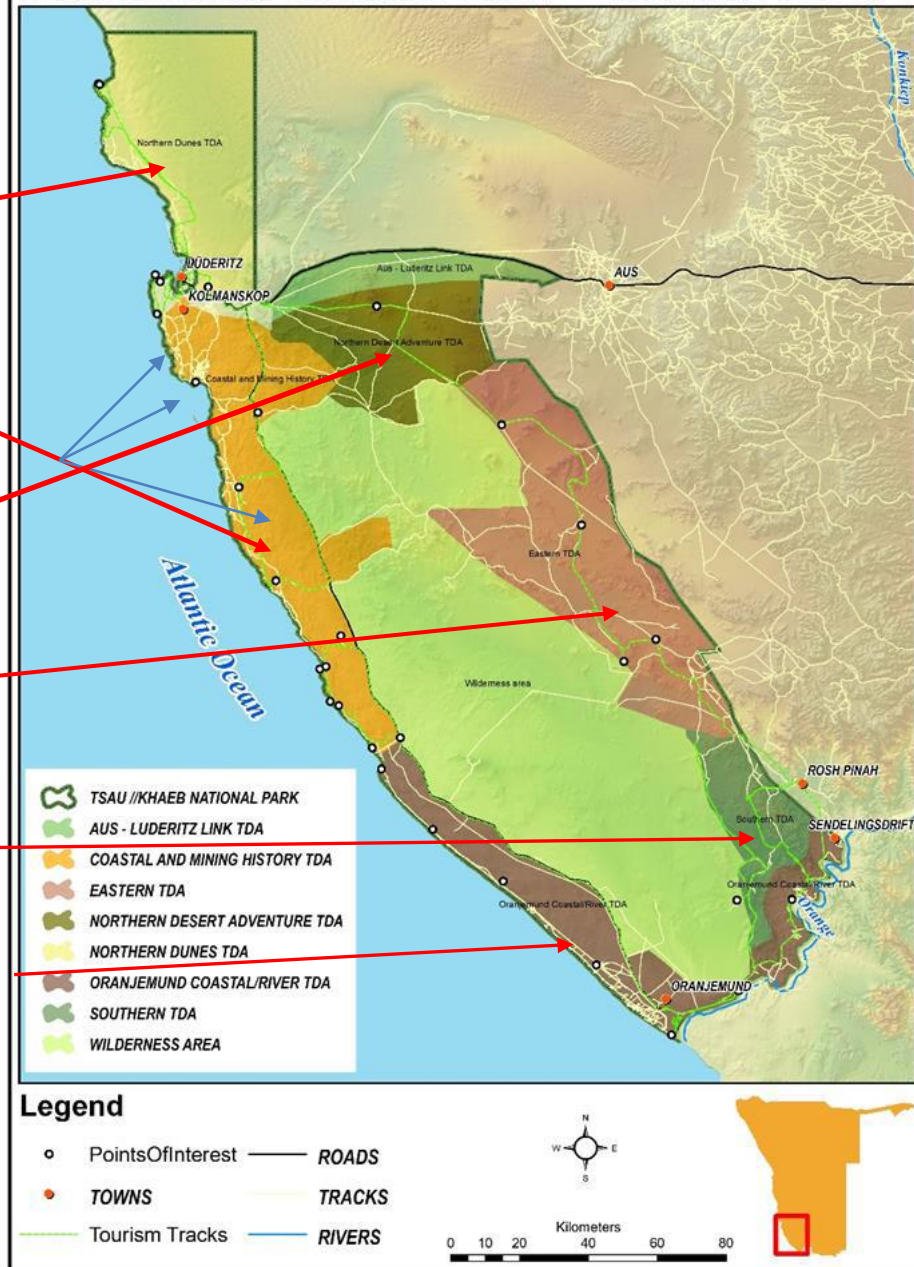
### Southern TDA

7. Red Dunes, Roter Kamm and Orange R.  
Oranjemund Coastal / Orange River

8. Oranjemund Coast and Mining

9. Orange River Mouth

## Tsau //Khaeb National Park - Tourism TDAs





# NORTHERN TDA: NORTHERN SAND AND SEA



## Attractions

- Coastline (sand, sea, shipwrecks, islands)
- Hottentots Bay
- Wildlife (seabirds, seals, penguins, Damara tern, springbok, gemsbok, brown hyena)
- Sand dune driving
- CharlottenTal historic buildings and grave site
- Proximity to Lüderitz





# NORTHERN TDA: NORTHERN SAND AND SEA



Awarded to: Living on the Edge

## Activities:

- Guided one-day or overnight sand and sea tours –Max. ten 4x4 vehicles (40 pax)
- Coastal and sand dune 4x4 route
- Camping at Kleinbootbaai and Hottentots Bay
- Fishing
- Adventure Zone at Agate Beach entrance gate
- Guided Mining Village history tour – Max. six 4x4 vehicles (24 pax)
- Guided quad biking –Max nine
- Guided 4x4 sand dune driving –Max six 4x4 vehicles (24 pax)
- Guided Sandboarding –Max 24 pax
- Guided Fishing & Island Tours –Max two boats (12 pax)

## Infrastructure:

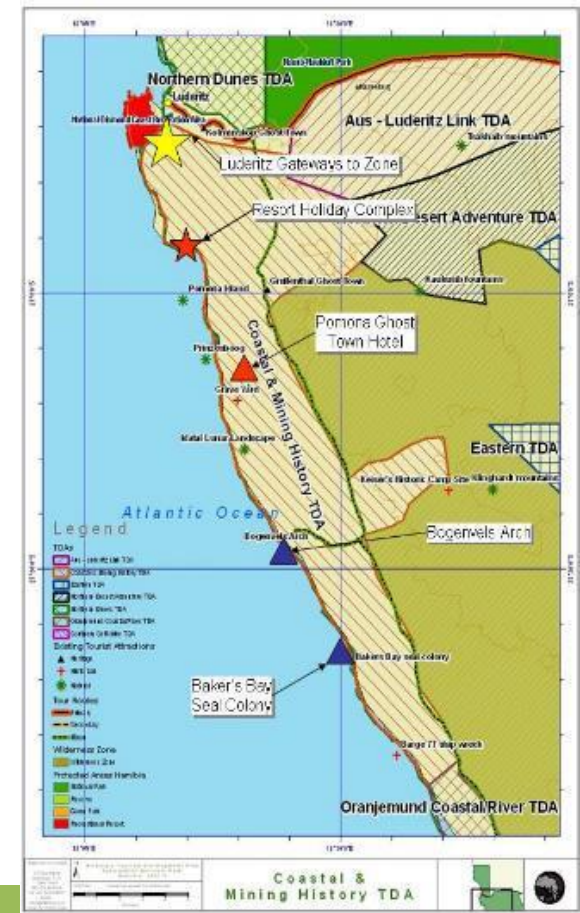
- Toilets and shelter at Kleinbootbaai mobile campsite
- 4x4 Tracks only
- Access Gate at Agate Beach
- Adventure Centre at Agate Gate (bookings & departures)
- Bookings & departures office
- Tea room and kiosk –Max 120 seated

## COASTAL AND MINING HISTORY TOURISM



## Attractions

Coastal / marine biodiversity (succulent Karoo, seabirds, dolphins, seals, penguins, Damara tern, springbok, gemsbok, brown hyena)  
Archeology (old shell middensites)  
Proximity to Lüderitz





# COASTAL AND MINING HISTORY TDA: LÜDERITZ PENINSULA

Not awarded to be readvertised.

## Activities:

- Day Visitors -self-drive, tour groups or guided
- Picnicking and fishing (also seasonal tickets)
- Sight seeing (scenery, wildlife, biodiversity, archeology, history)
- Resort at Griffith's Beach:
- Guided tours (history, biodiversity, Island, Dias Cross and Light House)
- Guided Fishing & Halifax Island Tours – Max two boats (12 pax)
- Water sports on Lagoon (non-motorized - wind surfing, kayaking, kite surfing)



## Infrastructure:

- Picnicking and fishing
- 2x4 access roads (some areas limited to 4x4)
- Entrance gate, picnic site toilets, shelters & braais & interpretative signage
- Development Node at Griffith's Bay
- Lagoon Lodge (16 units)
- Restaurant and kiosk –Max 80 seated

## COASTAL AND MINING HISTORY TDA:

### KOLMANSKOPPE

#### •Attractions:

Awarded to: Ghost Town Tours.

- Mining History Ghost Town
- Photographic icon
- Museum
- Education Centre
- Activities (Guided or self-guided):
- Sight seeing
- Photographing
- Environmental Education Courses
- Educational tours from Education Centre

#### Infrastructure

- Historic Buildings
- Entrance gate
- Museum
- Restaurant & kiosk with ablutions
- Education Centre

#### Concession Structure

- Current Status
- Buildings owned by Sperrgebiet Diamond Mining Company
- Managed by Operator
- Prime attraction
- High risk and high cost of maintenance
- Recommendation
-

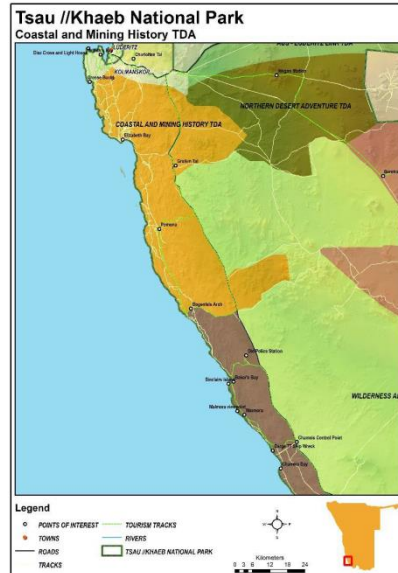


# COASTAL AND MINING HISTORY TDA: LÜDERITZ COAST & MINING

**Awarded to Sandwich Harbour 4x4:**

## Attractions:

- Mining History –ghost towns and mined areas (GrullenTal, Pomona, Bogenfels)
- Marine environment, archeology and paleontology
- Coastal scenery
- Landscapes
- Wildlife



## Activities (Guided or self-guided):

- Guided one-day bus tours to GrullenTal and Bogenfels Arch (2 per day –max 32 each, staggered)
- Guided one-day or overnight coastal 4x4 safaris to GrullenTal, Pomona, Bogenfels Arch on agreed routes (max ten 4x4 vehicles = 40 pax)
- Guided one-day or overnight inland 4x4 safaris to GrullenTal, Bogenfels Arch & Klinghardt Mountains on agreed routes (max ten 4x4 vehicles = 40 pax)
-

# EASTERN TOURISM DEVELOPMENT AREA

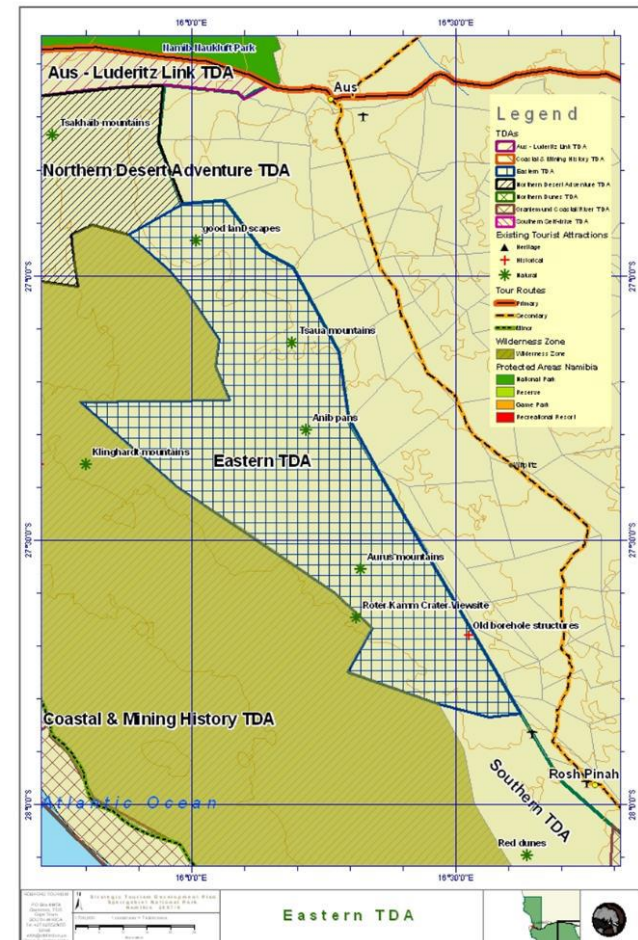
## 6.Game Viewing and Roter Kamm

**Awarded to Aus Desert Tours**



### Attractions:

- Scenic landscapes
- Mountain views (Aurus, Tsaua, Klinghardt)
- Wildlife and water points
- Rotter Kamm Crater
- History of farmer's grazing in drought years (50's –60's)





# ORANJEMUND COASTAL/ORANGE RIVER TDA: ORANGE RIVER MOUTH

Awarded to OMDis Town Transformation Agency



## Attractions:

- RAMSARWetland Site
- River Mouth
- Orange River
- Hochenfelshistorical site
- Birdlife
- Sand dunes



## Activities:

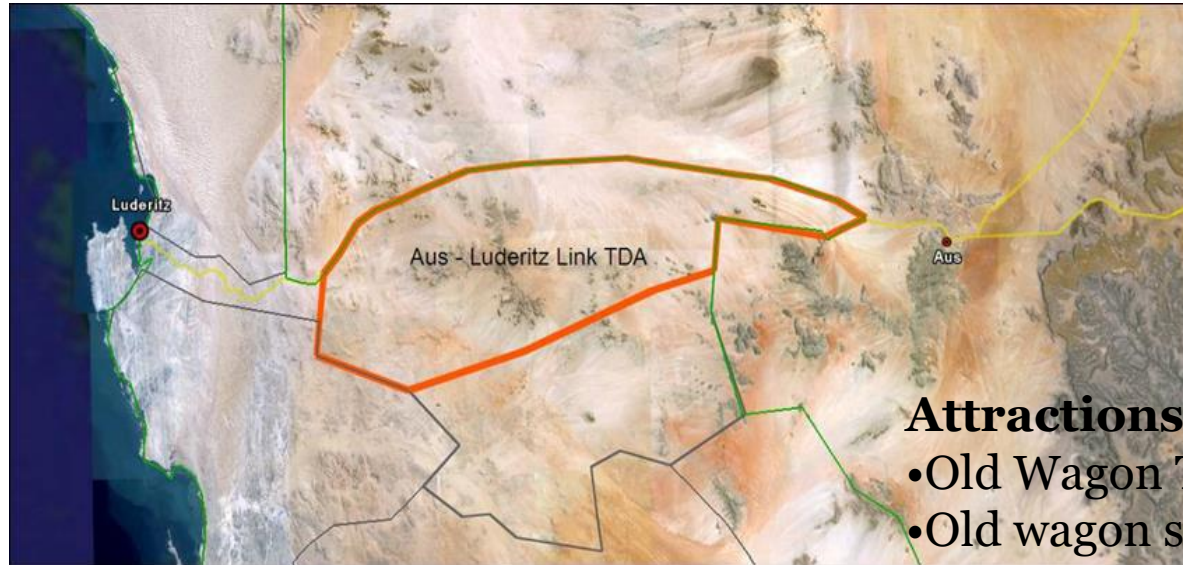
- River Mouth & river -River-based adventures
- Sight seeing
- Picnicking & camping
- Fishing, birding, hiking, canoeing
- Adventure Zone next to townlands -
- Dune-based adventures
- Guided quad biking –Max nine
- Guided 4x4 sand dune driving –Max six 4x4 vehicles (24 pax)
- Guided Sandboarding –Max 24 pax

The following Concessions have not been placed on tender based on the following reasons.





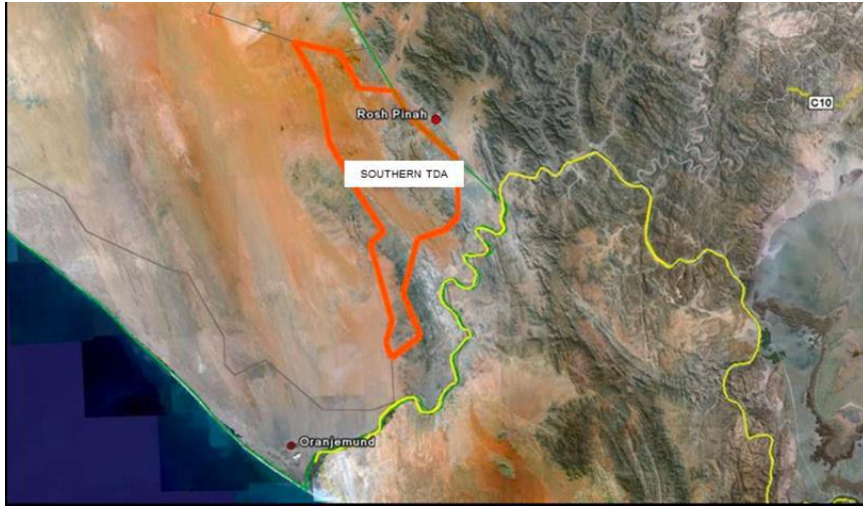
# The Aus- Luderitz Link TDA Ox Wagon Trail Concession.



## **Attractions:**

- Old Wagon Trail
  - Old wagon station
  - Scenic landscapes & mountains
  - Alternative route to/from Lüderitz
  - Wildlife
- It has been proposed that this Concession be awarded to The Aus Community Conservation Trust

## Southern TDA: Red Dunes and Orange River Concession.



### Attractions:

- Scenic landscapes (gravel plains, red dunes, valleys)
- Roter Kamm Crater
- Petrified dunes
- Waterfall site
- Rooilepeldepression
- Orange river
- Paleontology, archeology, caves, rock engravings, gorge, mining history

- It has been proposed that this Concession is Awarded to The !HAN/Awab Conervancy



# The Way Forward: for Concessions

- The formal Contracts between the Concessionaires and the Ministry must be concluded and signed.
- The outstanding issues regarding access to active mining areas that are covered by the Concessions must be concluded.
- The 70% de-gazettement of part of the Diamond Area 1 to be concluded.





Thank you.

